

Turbo-IR water meter

Turbo-IR water meter

Bermad Turbo IR water meters have been specially designed for applications in clean water and water containing dirt up to a certain percentage. This percentage depends upon the type of dirt in the water. The Turbo IR meter uses a multi-bladed plastic impeller fitted at the top of the water flow for measuring. In this position, the disruption due to solids in the water is minimised, meaning that an accurate measurement is possible. The Turbo IR water meter is a wear-resistant and easy-to-maintain product.

Product features:

- Magnetically coupled drive fully separated from the flowing water
- Dry register and airtight
- Low pressure loss
- Interchangeable register

Mechanical register Turbo-IR-M:

- Analogous counters
- Flow display
- Leak indicator
- 1 pulse (reed switch)

Options:

- without pulse (reed switch)



Turbo IR water meter Technical data

Specifications:

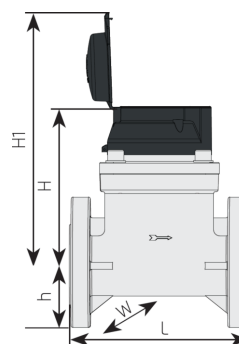
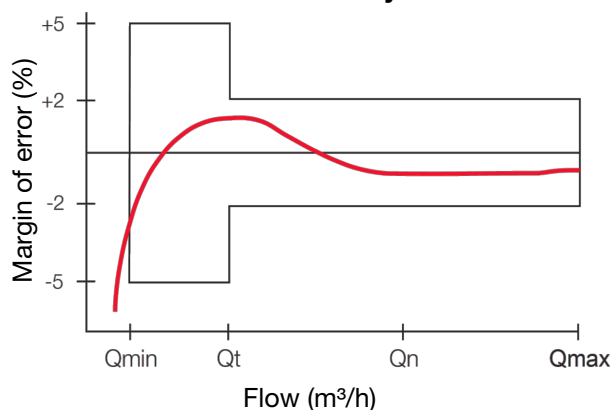
- Sizes: 2" - 12"; DN50 - DN300
- Working pressure: 0 - 16 bar
- Max. Temperature: 50 °C
- Connection: ISO flange
- Pressure class: ISO PN16

Materials:

- Body and cover: cast iron with polyester coating
- Register: plastic and glass
- Internal components: plastic and stainless steel

Models		2"	2½"	3"	4"	5"	6"	8"	10"	12"
DN	mm	50	65	80	100	125	150	200	250	300
Nom. capacity Q _{nom} Q _n	m ³ /h	35	50	75	125	175	250	450	600	800
Transitional capacity Q _t	m ³ /h	10,5	15	22,5	37,5	52,5	75	135	180	240
Min. capacity Q _{min}	m ³ /h	2,8	4	6	10	14	20	35	48	64
Max. capacity peak Q _{max}	m ³ /h	70	100	150	250	350	500	900	1200	1600
Flange ISO PN16 bolt circle dia.	mm	125	145	160	180	210	240	295	355	410
Length L	mm	200	200	225	250	250	300	350	450	500
Height H	mm	177	180	185	185	193	198	224	248	274
Height H1	mm	247	250	255	255	263	268	294	318	344
Height h	mm	75	82	95	106	110	135	162	194	220
Width W	mm	125	140	160	180	200	240	295	350	400
Weight	kg	10,5	11,8	15,5	17,5	19,5	30,5	42,5	60,1	82,5
Pulse 1/100 *		V	V	V	V	V				
Pulse 1/1.000 (1/1m ³) *		V	V	V	V	V	V	V	V	V
Pulse 1/10.000 (1/10m ³) *								V	V	V

Accuracy:



Reed switch (magnetic register):

- Cable: 2 wires, 1.5m long
- Switch: single
- Switching voltage: 24V AC/DC max.
- Switching current: 0,01A max.

Postadress:

TRÄDGÅRDSTEKNIK AB
Helsingborgsvägen 578, Varalöv
262 96 ÄNGELHOLM

Telefon : 0431-222 90
Bg.nr : 5743-7980
Org.nr : 556409-6120

URL:

www.tradgardsteknik.se
E-postadress:
info@tradgardsteknik.se